

BEECROFT - CHELTENHAM
CIVIC TRUST
INCORPORATED
P.O. BOX 31, BEECROFT. N.S.W. 2119

BULLETIN 4

November 2006

Web Site: www.2119.org.au

President: Carolyn Watt, Tel: 9876 3266
Email: carowatt@ozemail.com.au

Secretary: Joan Reid, Tel: 9875 1318
Email: jim.reid@bigpond.com

Proposed North West Rail Link a Catastrophe for Cheltenham and Beecroft

The Beecroft Cheltenham Civic Trust is holding a public meeting for the community to review the proposal. The meeting will be on Monday 20th November at Cheltenham Recreation Club, The Crescent, Cheltenham at 7.30pm.

* The proposal comprises a tunnel some 16km long from the Main North Line at Beecroft to Burns Rd, Kellyville. There would be a further 4km above ground line to Rouse Hill. It is due to be operational in 2017.

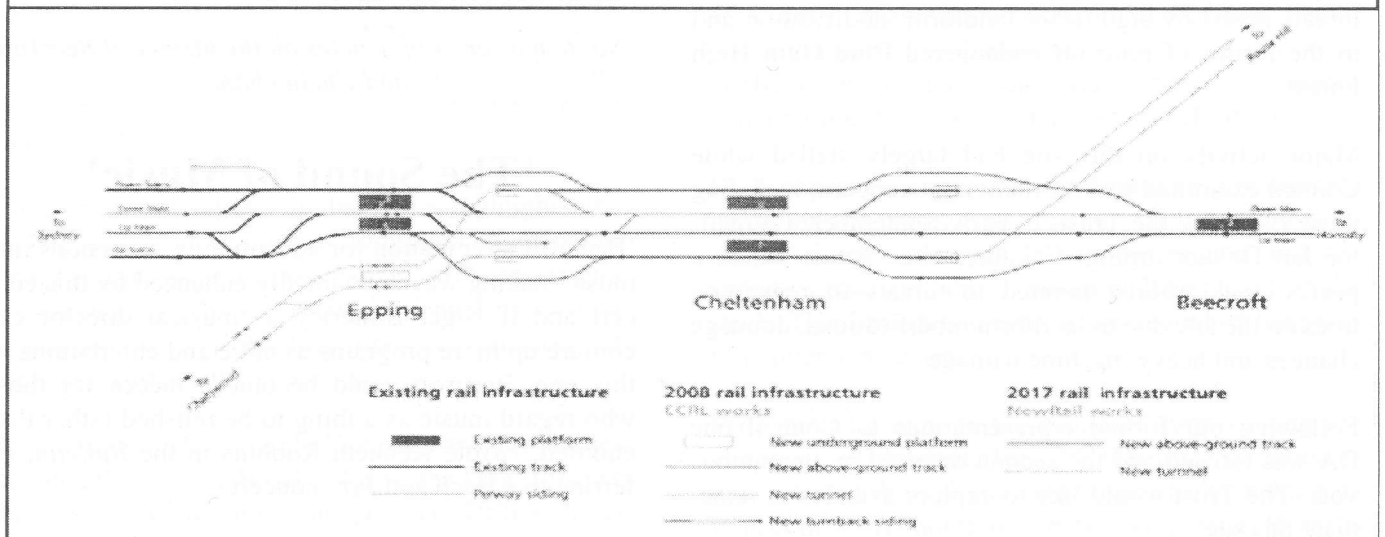
* The dive point to commence the underground tunnel is proposed in the vicinity of Murray Rd, Beecroft. The tunnel would then go under the Beecroft Tennis Courts, The Village Green and Beecroft Public School at a depth of only 15m then west at a greater depth under parts of Beecroft and Thompson's Corner to Franklin Rd and beyond.

* There would be four lines for passenger trains between just north of Cheltenham station and the tunnel portal. It is proposed to add a further two lines for freight trains on the outside of the passenger lines making six lines in this sector.

* There would be four lines between Cheltenham and Epping. Cheltenham Station would be rebuilt with two larger island platforms. The existing two tracks in the centre would be for passenger trains and the new outer tracks for freight trains. The current parking on both sides of the station would be lost.

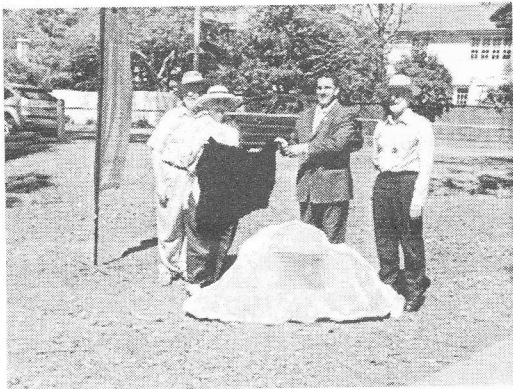
* This will have a serious effect on the residential amenity and property values especially along the rail corridor and the valley to the east. As well there will be the noise, traffic and vibration during construction of the dive point portal, the tunnel and additional rail lines. The possible damage to houses along the route from vibration during construction cannot be ignored.

It is not too late to act. TIDC (Transport Infrastructure Development Corporation) anticipates completing the preliminary environmental assessment soon and then making the proposal available for public comment in December.



Centenary celebrations

Last year the Hornsby Shire Centenary Steering Committee put together a detailed program of events to celebrate Hornsby Shire's 100th birthday. Among the chosen events was a series of plaque unveilings to recognise locations of significance in the settlement of Hornsby Shire, including the plaque on the Beecroft Village Green. This was unveiled on 16th September.



From left to right: Councillor Nannelli, Professor Carol Liston, Mayor Nick Berman and Councillor Dekker

Update on BCCT Development Application related activities

The Trust has been kept busy on a number of fronts. In particular:

68 – 86 Hull Road

This subdivision has been of major concern to neighbours and the Trust for some time, due to the threats posed by significant landform modification and to the health of remnant endangered Blue Gum High Forest.

Major activity on this site had largely stalled while Council examined various matters of concern, including those raised by the Trust. In early September, Councillor Jan Dekker arranged another site visit at which a professional arborist pointed to threats to remaining trees on the site due to landform modifications, drainage changes and heavy machine damage.

Following our formal representations to Council one DA was refused and the second deferred by unanimous vote. The Trust would like to explore avenues to remediate this site.

We wish to thank Council for their on-going support on this matter, and in particular we appreciate the support of Councillors Dekker and Nannelli. With his recent sad passing, the support that Councillor Nannelli has given to the Trust on several important matters, including this one, will be sorely missed.

Child Care

Child care related issues in the Beecroft Cheltenham have been another significant issue for us. As well as two specific development proposals in Wongala Crescent, the Trust also provided comment on the proposed new Child Care Policy.

The Civic Trust continues to make the point that we have no objections per se to Child Care facilities in the area. What we do object to are developments that we consider inappropriate. Despite our continued opposition to a proposal at 23A Wongala, Council approved this development. We continue to oppose another development proposal at 45 Wongala (next to Arden) predominantly on traffic and safety impacts. Following Council's refusal of consent, the matter is due to come before the Land and Environment Court on 4th and 5th December. The Trust intends to make representations at this sitting.

The Trust has congratulated the Council planning department for a very professional review of the Child Care situation in HSC, together with policy proposals for a coherent approach to this issue. BCCT appreciated the opportunity to comment on this policy.

Between 1967 and 1976, the Beecroft Music Club was a vital part of the cultural life of the district.

No. 6 in a series of articles on the history of Beecroft and Cheltenham

'The Sound of Music'

'Beecroft's reputation for adventurous excursions into music making was undoubtedly enhanced by this concert and if Nigel Butterley as musical director can conjure up more programs as alive and entertaining as this one, Beecroft could become a mecca for those who regard music as a thing to be relished rather than endured,' wrote Kenneth Robbins in the *Bulletin*, referring to a Bach and Jazz concert.

Another memorable comment came from Fred Blanks, the music critic for the *S.M.H.* about the Children's Percussion Concert: 'The noise the children made would chase all the devils out of Beecroft.' Yes! Music was in the air in Beecroft in those days – between thirty and forty years ago.

It was born on 1st August 1967, christened the Beecroft Music Club, spent its infancy at St. John's Church, and later moved to the Concert Hall of the Presbyterian Church. The change was indicative, one might say, of its pluralistic nature. It was robust from birth and was sustained, as Kenneth Robbins said, with programs 'alive, adventurous and entertaining'. Those 'alive, adventurous and entertaining' programs each year comprised eight Pre-Concert Student Recitals, eight Chamber Music Series, and six Children's Concert Series.

Then there were those concerts that, while under the auspices of the Club, were presented in venues outside Beecroft, one of them and perhaps the most ambitious, was that staged at Macquarie University by the Baroque Chamber Players, all of whom were professors of the University of Indiana. What was special and indeed memorable, besides the delightful personalities of each of the Players, was that the event comprised master classes during the afternoon for the Harpsichord, Flute, Oboe and Double Bass, followed by an evening workshop concert.

The Players' reputation preceded them. It was described as 'nothing less than flawless' by Harold Schonberg writing for the *New York Times*, and was indeed demonstrated both in performance and in master class.

Other highlights in which the Club was involved included its management of the first professional concert given by the Renaissance Players in the Cell Block Theatre, concerts given by musicians in the Club for the International Society of Contemporary Music in the same venue, a Vietnam Moratorium Concert in the Round House, University of N.S.W. and a 'Bach and Jazz Concert' in the courtyard of Macquarie University.

While these have been singled out as highlights, the Club's standard programs of traditional and contemporary music were no less 'alive, adventurous and entertaining', the bulk of them presented by leading Australian artists, including first performances of works by Australian composers.

These leading Australian Solo Artists and Ensembles included the Sydney Wind Soloists, the Don Burrows Quintet, Martin Wesley Smith, Frances Hillier, Nigel

Butterley, Marilyn Richardson, James Christiansen, John Champ, the Sydney Baroque Soloists, Laura String Quartet, Donald Hazelwood, Marie Van Hove, the Austral Quartet, Carl Pini and the New Dance Theatre.

Australian composers included Martin Wesley Smith, Felix Werder, Nigel Butterley, Ian Farr, Peter Scult-horpe, Richard Meale and a group of young composers including Kim Williams, Nick Negerevich, Gavin Costelow, Richard Kefford and Ross Edwards.

Readers of this article who were members of the Beecroft Music Club and who attended its concerts will be aware that this is only a small selection of the artists who performed during the Club's existence. Others might well ask, 'Where is it now, this 'alive, adventurous and entertaining' Club? The answer! Well, that big building on Bennelong Point opened in 1974, and our lovers of music needed to sample what was on offer there. Perhaps those who administered the Club became a little weary. Maybe it was a combination of both. It is rather sad, but then again Beecroft has other compensations and it is still a good place to be.

The writer is James Hillier, who served as president of the Club and still resides in that 'good place to be.'

Health Impacts of Vehicle Emissions Within and From Road Tunnels

Public Meeting held by the Beecroft Cheltenham Civic Trust, September 10, 2006.

Despite the rain and high winds, a number of concerned citizens attended this most informative meeting. Dr Ray Kearney, Head of the Department of Infectious Diseases and Immunology at the University of Sydney, spoke passionately of the serious health issues associated with vehicle emissions. The cost to public health of these illnesses is never considered when proposals for roads and road tunnels are made.

Dr Kearney gave graphic illustrations of groundstrike involving the fall of emissions of toxic pollution from stacks. These emissions fall to the ground and adversely impact all those within a 2km radius of the stack. This impact is greatly increased when temperature inversion occurs.

With tunnels, such as the proposed tunnel along the alignment of Pennant Hills Rd, this toxic pollution is concentrated through the ventilation stacks making its impact on surrounding residents even greater. Records

show that twice as many people die from the effects of vehicle pollution as from road accidents. This is such a serious health issue that the Trust has made a DVD of the presentation by Dr Kearney. It will be available for purchase from Malcolm Powell, PO Box 139 Beecroft, 2119.
Tel: 98762980, Fax: 98698280.

Spring Walk



The annual Spring Walk took place on Sunday afternoon 20th August. The weather was fine with a cool breeze blowing through the trees. A sizable group of over 50 walkers set off from Day Rd picnic area at Cheltenham and trekked along the Devlins Creek fire trails to the upper reaches of the Lane Cove River. The highlight of the circular walk was the delightful STEP track located in the Lane Cove National Park at South Turramurra. The STEP (South Turramurra Environment Protection association) track is a loop track between the Lane Cove River and Canoon Rd South Turramurra. It was installed by volunteers in the 1970's and is often bypassed by walkers on the main track. So it was a surprise to many of the walkers on the day. The participants were rewarded for their 2 hour trek with afternoon tea back at Day Rd. Details of next year's May autumn walk will be announced in the new year.

Council Forum

Hornsby Council is holding a forum for C Ward residents on Wednesday 22 November at 6.30 pm. The venue is Epping Creative Centre, 26 Stanley Street, Epping. This is an opportunity for resident to bring matters of concern to Council.

Councillor Owen Nannelli

The Beecroft Cheltenham Civic Trust was deeply saddened by the death of our esteemed C ward Councillor, Owen Nannelli on October 10th. Councillor Nannelli had a long involvement with the Trust and supported us on many issues, especially on Heritage and Environmental matters. His considerable insight into problems led him to better understand the ramifications of complex issues. He was willing to attend site visits and to support to the Trust. He will be greatly missed. We extend our sympathy to his family and his fellow Councillors.

Copeland Road Intersection

Following the recent tragic accident at the intersection of Copeland Road and Pennant Hills Road, the Trust made representations to the RTA about the lights which allowed a filter right hand turn into Copeland Road. We were pleased that the RTA has altered these lights so that this turn should only be made when southbound traffic is stopped.

Meeting Reminder

The Beecroft Cheltenham Civic Trust is holding a public meeting for the community to review the North West Rail Link proposal. The meeting will be on Monday 20th November at Cheltenham Recreation Club, The Crescent, Cheltenham at 7.30pm.

See full details on page 1 of this bulletin or go to the TIDC website at www.tidc.nsw.gov.au to look at the proposal in detail. Click on the news item on 5th June: Project Application submitted for North West Rail Link